

USB Download



1. Power up Monitor and insert USB memory stick.
2. Monitor will automatically begin downloading data
Display will show "Downloading..."
****DO NOT REMOVE USB STICK****
3. When USB download is done, time is dependant to the amount of data downloaded,
Display will show "---Complete---".
4. It's now safe to Remove USB Stick from Monitor.

Download

```

Downloading...
Test_0406
Curr:
Temp/Hum: 0.0/ 0.0
12/31/06 20:13
  
```

```

Downloading...
---Complete---
Curr: 0/ /
Temp/Hum: 0.0/ 0.0
12/31/06 20:18
  
```

Download USB Content

There are multiple modes that the monitor can be operating in for file formats:

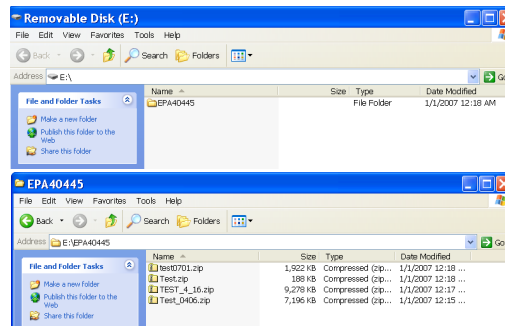
If the monitor is running in "Normal" mode, nothing is changed upon USB download.

If the monitor is running in "Weekly" mode, every Sunday at 12AM a new folder is created, the week number appended to the with original site code. These are in a FIFO format for a certain amount of weeks (Normally 26).

If the monitor is running in "Reset on USB" mode, when the USB stick is inserted and data downloaded, a new folder is created with the date appended to the original site code.

Regardless of setup , data is never deleted when downloading using USB method. All data is stored on the power monitor.

1. Insert USB memory stick into computer
2. Explore to the contents of USB stick.
In root directory of the stick will be the power monitor's serial number in format EPA*****
3. Depending on the configuration of the power monitor, the files will be in a Zip format or file folders.



Upload Data

1. Go to filemanager.rxms.com
username: **epauser**
password: **epauser123**
2. Upload data using the filemanager system.
3. Email data@rxms.com informing that you have uploaded data and where the files were placed.

OR

Email Data

****Files should not be over 10Mbytes for email option****

1. Zip file folder (or folders) into one zip file.
2. Email data to data@rxms.com



Instructions:
Direct Download

011

Please return to:



Rx Monitoring Services Inc.
22A Eastman Ave
Bedford NH, 03110

