



monitoring services

INSTALLATION & USAGE GUIDE OF THE CX EMULATOR

Start by downloading the Cx Emulator.

<https://reports.rxms.com/>

Under Software -> Select Cx Emulator -> Add to Cart

Go to Checkout

If you do not have a account you will have to set one up.

Finish the checkout

No Shipping Required - Free

Pick today as delivery date

Free Checkout - Agree to terms and conditions.

Confirm order.

You can now go to the download setion in your account and download the software.

Subscribing to our newsletter will let you know when software updates are available for any of our products.

The Cx_Emulator is a program that is designed so you can simulate the usage of the Cx monitor and it's software without having to have the hardware available.

Windows® XP / Windows® 7
Compatible



Name and E-mail addresses will never be shared outside of Rx Monitoring Services Inc.

Rev 01

October 02, 2013

1



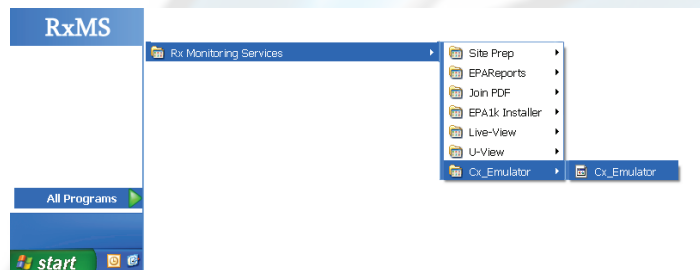
1: Install Cx_Emulator by running installer package after download

Follow instruction through installer process.

2: Start Cx_Emulator

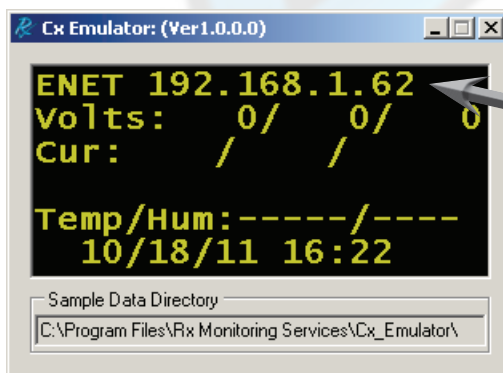
Go to Start Menu » All Programs » Rx Monitoring Service » Cx_Emulator » Launch Cx_Emulator

Or other location if default was changed during installation.



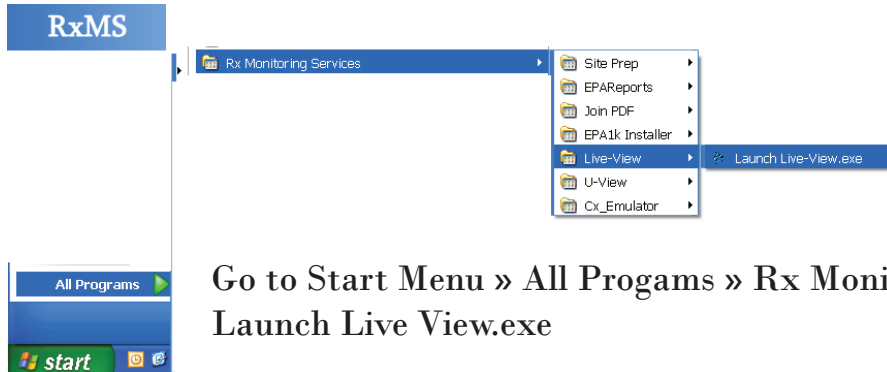
Windows may pop-up a “Windows Security Alert”. Press **Unblock** for the program to operate properly.

3: Get IP Address from Cx_Emulator Screen

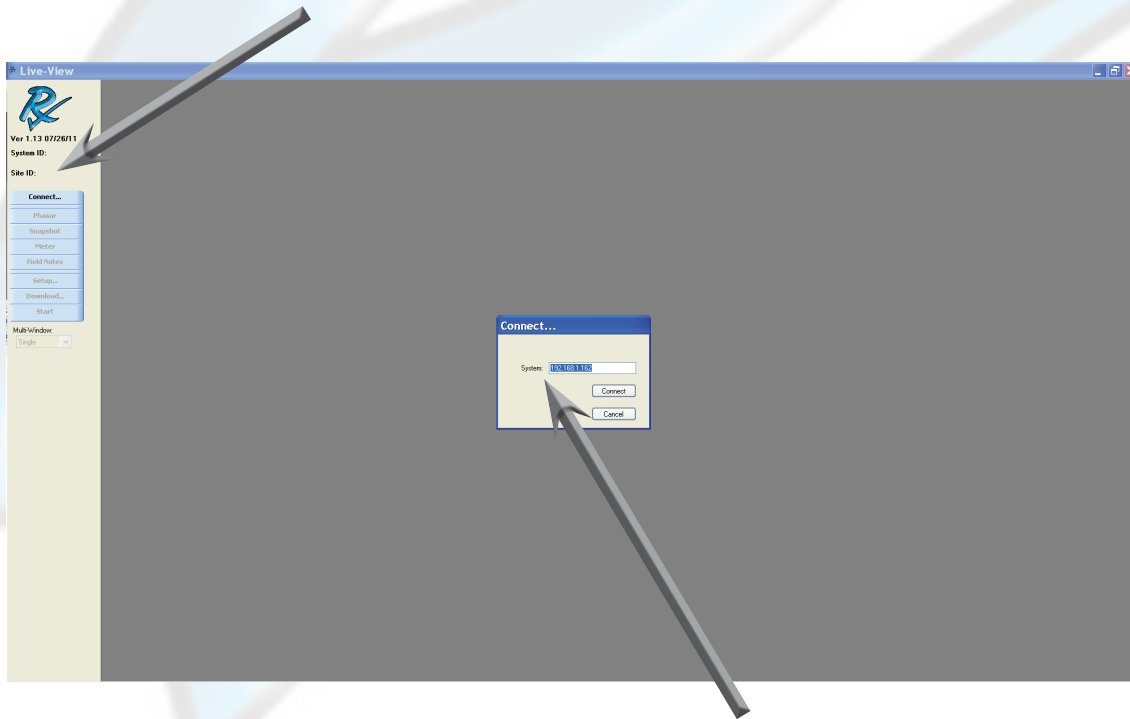


IP address of Cx_Emulator is displayed in the Cx_Emulator window

4: Start Live-View® & Connect



1. Click **Connect** Button



2. Enter IP address from Cx_Emulator Window
Click **Connect**

5: Live View® is now connected to the Cx_Emulator.

See Live-View® Documentation for further details

